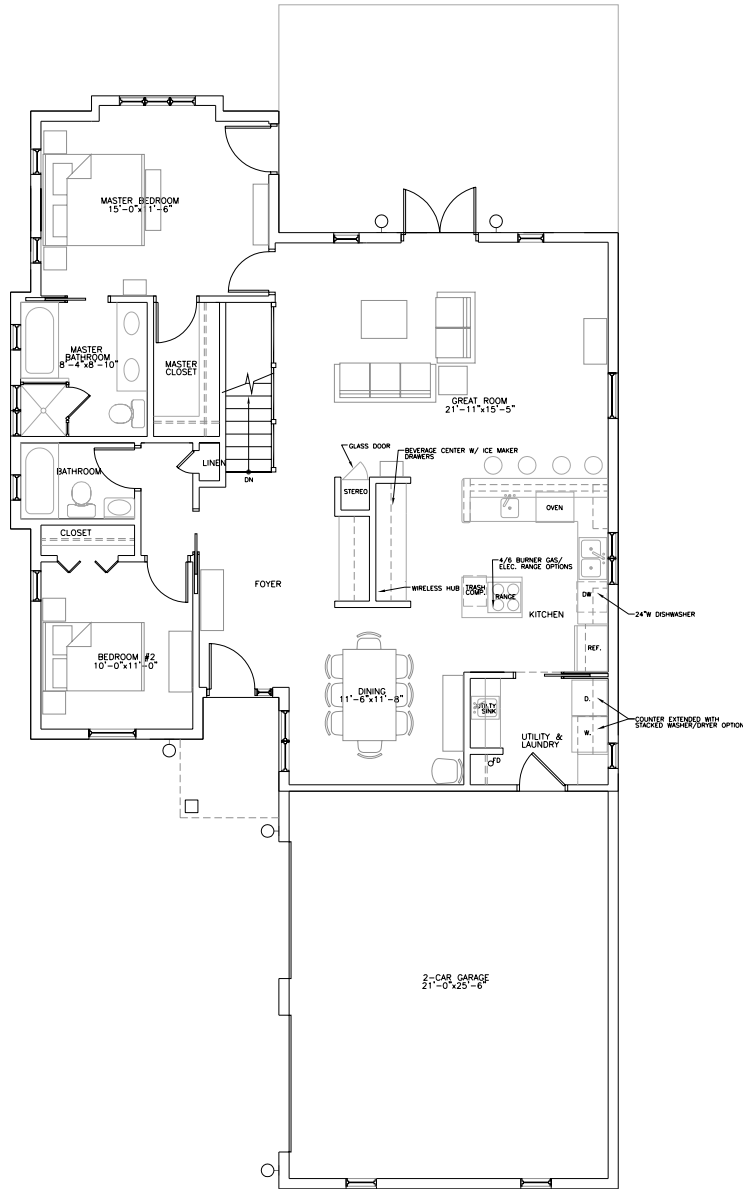


# Greens of Ashland

PROPOSED RESIDENTIAL DEVELOPMENT • ST. JOSEPH, MISSOURI



2 - BEDROOM

PRELIMINARY  
NOT FOR CONSTRUCTION, PERFORMING  
FUNCTIONS OR IMPLEMENTATION

1450 SF

Goldberg, Sullivan & McCreery, Inc. is not responsible for any errors or omissions in this drawing. The user of this drawing is advised to verify all dimensions and specifications with the contractor. This drawing is intended for informational purposes only and should not be used for construction without the approval of the architect.

Goldberg, Sullivan & McCreery, Inc. Architecture, Planning and Interiors

510 Francis St. - Suite 314  
St. Joseph, MO 64501  
816 233-9300  
Fax: 816 233-9399 E-MAIL: info@ggo-pc.com

Sheet Number

Project:

Contractor:

Revisions:

PROJECT NO:  
DATE: 12/06/05  
DRAWN BY:  
CHECKED BY:

*Greens of Ashland*  
PROPOSED RESIDENTIAL DEVELOPMENT • ST. JOSEPH, MISSOURI

\_\_\_\_\_  
\_\_\_\_\_  
\_\_\_\_\_



SHEET TITLE: