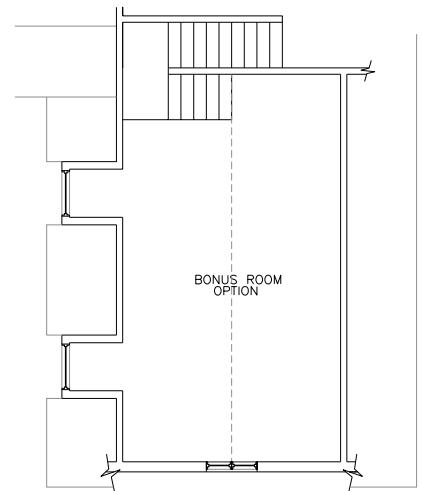
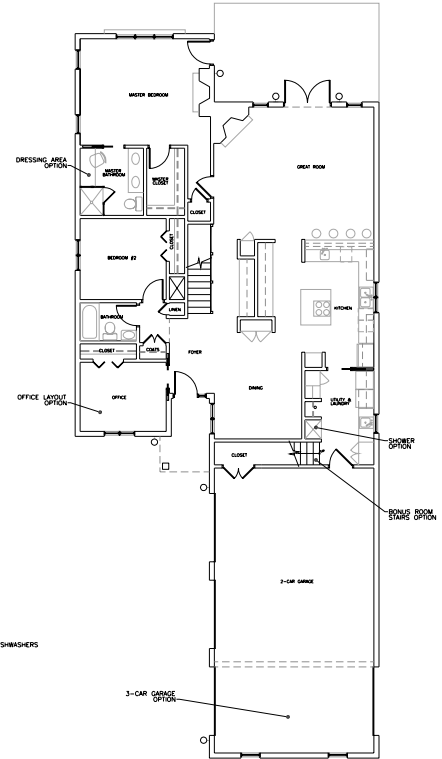
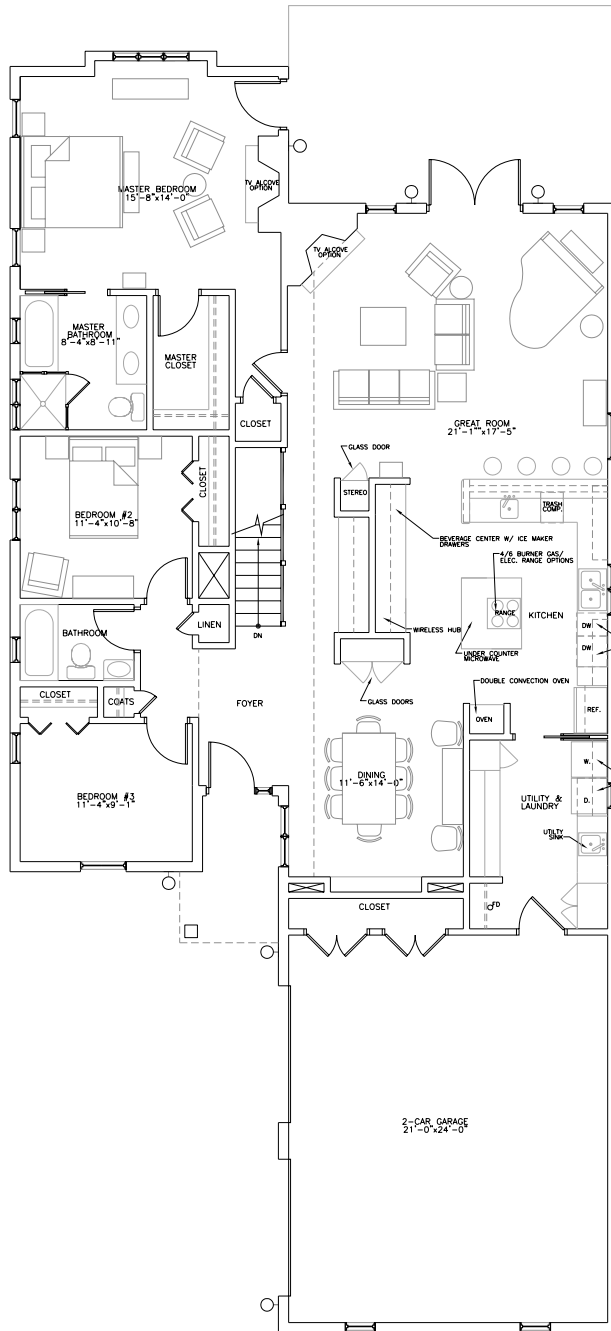


# Greens of Ashland

PROPOSED RESIDENTIAL DEVELOPMENT • ST. JOSEPH, MISSOURI



PRELIMINARY  
NOT FOR CONSTRUCTION, PERFORMING  
FUNCTIONS OR IMPLEMENTATION

1995 SF

Goldberg, Sullivan & McCrery, Inc. is not responsible for construction, performing functions or implementation of this document.

Goldberg, Sullivan & McCrery, Inc. Architecture, Planning and Interiors

510 Francis St. - Suite 314  
St. Joseph, MO 64501  
816 233-9300  
Fax: 816 233-9399 E-MAIL: info@ggo-pc.com

Sheet Number

Project:

Contractor:

Revisions:

PROJECT NO:  
DATE: 12/06/05  
DRAWN BY:  
CHECKED BY:

*Greens of Ashland*  
PROPOSED RESIDENTIAL DEVELOPMENT • ST. JOSEPH, MISSOURI

SHEET TITLE:

